

Business-based

# Information Technology Solutions



**Small to  
Medium-size  
Businesses**



THE GREENTREE GROUP

The Competitive Edge Solution™

## **Delivering quality, cost-effective business solutions**

The Greentree Group is in the business of helping companies like yours do a better job of assembling, moving, and managing

information so that you can operate your business more efficiently, effectively, and profitably.

Greentree professionals will provide IT solutions for you with several goals in mind:



- Optimizing your IT systems and the business processes they support
- Providing a flexible, scalable system design that makes future changes and upgrades simpler and easier
- Minimizing your operational costs
- Maximizing your return on investment

**Greentree has been providing technology-enabled business solutions for companies like yours since 1993. Our core competencies include information technology, financial management, and program management. For more details, contact a Greentree representative, or visit us at: [www.greentreegroup.com](http://www.greentreegroup.com).**

# Bringing the competitive-edge solution to your business

Today, small businesses face many challenges. Operating efficiently. Controlling costs. Improving market share. Increasing customer loyalty. In short, becoming—and remaining—competitive.

To make matters worse, many companies are using outdated IT systems; vital systems are frequently slow; and systems/components are regularly being reconfigured.

Greentree IT professionals can help you solve the business-based challenges that are often created by these types of IT problems. We can help bring the "The Competitive Edge Solution<sup>®</sup>" to your company by providing the following IT services:

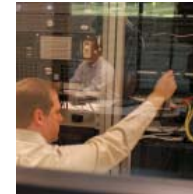
- Customized solutions
- Proactive monitoring and maintenance
- Software—new and upgrades
- Hardware—state-of-the-art/traditional systems

[www.greentreegroup.com](http://www.greentreegroup.com)



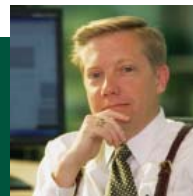
## Why choose Greentree?

- We have been a trusted advisor and partner for area businesses for more than a decade.
- We provide cost-effective IT solutions designed to meet your business needs.
- We employ Microsoft<sup>®</sup> Certified IT professionals who offer a broad range of Microsoft<sup>®</sup> enabled solutions for servers, desktops, networking, and mobile devices.
- We speak your language—plain English, not computer babble.
- We believe in—and live by—our core values.



## Core Values

- Integrity
- Client focus
- Employee welfare
- Client partnering



"What makes Greentree unique today—and what assures our continuing success—are our exceptional people. They bring integrity, extraordinary technical and business skills, and a solid commitment to Greentree and its clients." —Travis Greenwood, CEO

## More for your computing dollar

Greentree offers more for today's small to medium-size business—attention to your specific business needs; customized, business-based solutions; a solid working partnership; and value-based services and support.

Value-added support services include:

- Competitive, guaranteed pricing
- Access to Microsoft<sup>®</sup> resources
- Cost-effective hardware and software solutions
- Employee training



*Because it's about your business, not technology.*

Business-based  
**Information Technology  
Solutions**



1360 Technology Court, Suite 100  
Beavercreek, OH 45430

Phone: (937) 490-5500

Fax: (937) 490-5510

Email: [microsoftsolutions@greentreegroup.com](mailto:microsoftsolutions@greentreegroup.com)

Web: [www.greentreegroup.com](http://www.greentreegroup.com)

I would like to get "The Competitive Edge Solution®"  
for my business. Please have a Greentree IT profes-  
sional contact me about one or more of the following:

- FREE IT** business needs assessment
- Customized solutions
- Proactive monitoring and maintenance
- Software—upgrades and new
- Hardware—state-of-the-art/traditional systems
- Competitive, guaranteed pricing
- Access to Microsoft® resources
- Cost-effective hardware and software solutions
- Employee training

NAME \_\_\_\_\_

COMPANY NAME \_\_\_\_\_

STREET ADDRESS \_\_\_\_\_

CITY \_\_\_\_\_

STATE \_\_\_\_\_ ZIP \_\_\_\_\_

TELEPHONE NUMBER \_\_\_\_\_

FAX NUMBER \_\_\_\_\_

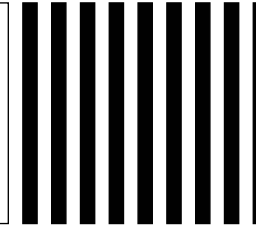
EMAIL ADDRESS \_\_\_\_\_

COMMENTS/SPECIFIC NEEDS \_\_\_\_\_

\_\_\_\_\_

Greentree has been providing technology-  
enabled business solutions for companies  
like yours since 1993. Our core competencies  
include information technology, financial  
management, and program management.

NO POSTAGE  
NECESSARY  
IF MAILED  
IN THE  
UNITED STATES



**BUSINESS REPLY MAIL**  
FIRST-CLASS MAIL PERMIT NO. 412 DAYTON OH

POSTAGE WILL BE PAID BY ADDRESSEE

THE GREENTREE GROUP  
1360 TECHNOLOGY CT STE 100  
DAYTON OH 45430-9921





## THE GREENTREE GROUP

**The Competitive Edge Solution®**

1360 Technology Court, Suite 100  
Beavercreek, OH 45430

Phone: (937) 490-5500

Fax: (937) 490-5510

Email: [microsoftsolutions@greentreegroup.com](mailto:microsoftsolutions@greentreegroup.com)

Web: [www.greentreegroup.com](http://www.greentreegroup.com)